

*Skinny Dog*

EST. HOTEL 1873

EVENTS





# WELCOME

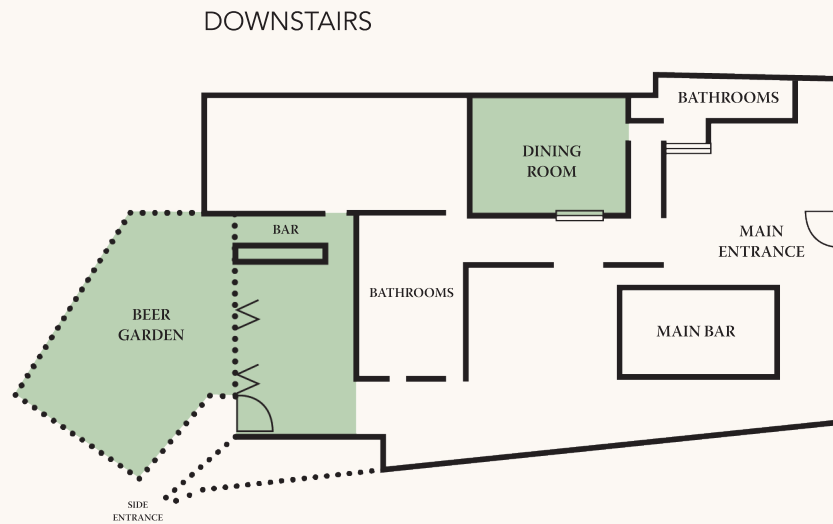
Smack bang in the middle of Kew Junction is where you find us, a bustling local institution serving cold beers and great food since 1853. With two levels and multiple offerings there is something for everyone at The Skinny Dog Hotel.

Downstairs, you will find a comfy pub atmosphere with dining rooms to enjoy classic pub fare, two bars and a beer garden.

Upstairs, a light filled atrium awaits, full of hanging plants, indoor and outdoor open plan spaces for year round use.

There are many different every spaces to cater to any requirement be it semi-private, exclusive or just casual bar reservations.

# Venue FLOOR PLAN



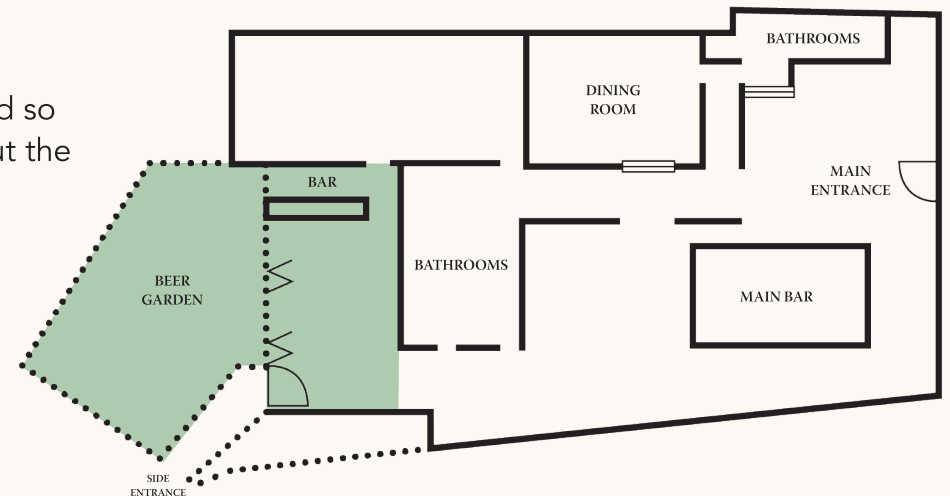












# Downstairs BEER GARDEN BAR

Exclusive hire of the beer garden and inside back bar includes a private entrance to provide your very own section of the pub!

The indoor bar is fully covered so you won't have to worry about the elements.

For smaller events we suggest having this area semi-private by hiring half of the bar and beer garden.



										
SEMI-PRIVATE	50	N/A	✓	✓	✓	✓	✓	✓	✓	✓
PRIVATE	130	N/A								
	COCKTAIL	SEATED	PARTIALLY COVERED	WHEELCHAIR ACCESS	MIC	SCREEN	PRIVATE MUSIC	PRIVATE BAR	HEATING	COOLING

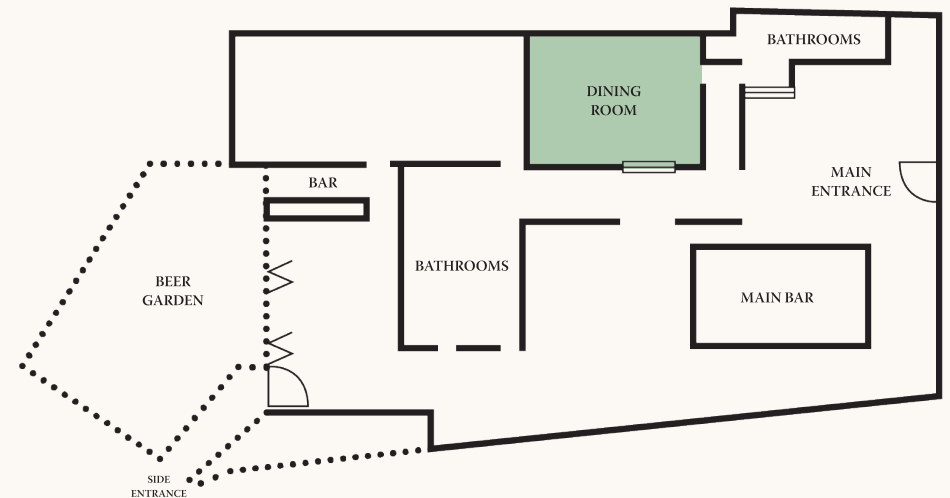




# Downstairs DINING ROOM

Nestled away from the main bar in the middle of the venue, our semi-private dining room features exposed brickwork and statement art pieces giving big NY loft vibes.

Perfect for seated events that want a separate space but with a vibrant atmosphere.



50

COCKTAIL



50

SEATED



COVERED



WHEELCHAIR  
ACCESS



MIC



SCREEN



PRIVATE  
MUSIC



PRIVATE  
BAR



HEATING



COOLING

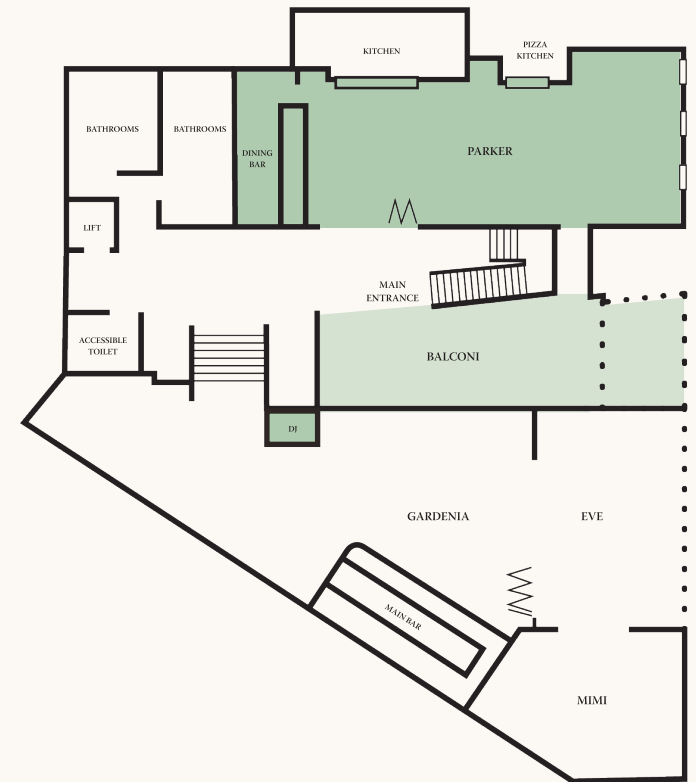












# Upstairs PARKER

A versatile art deco restaurant space seamlessly transitions between standing and seated event configurations.

A bi-fold door ensures privacy, with an elegant mirrored bar and stylish decor for a visually captivating setting.

For larger events, the adjoining Balconi space offers exclusive access to the mezzanine of the upstairs area.



										
PARKER	70	60	✓	✓	✓	✓	✓	✓	✓	✓
PARKER + BALCONI	1500	100								
	COCKTAIL	SEATED	PARTIALLY COVERED	WHEELCHAIR ACCESS	MIC	SCREEN	PRIVATE MUSIC	PRIVATE BAR	HEATING	COOLING

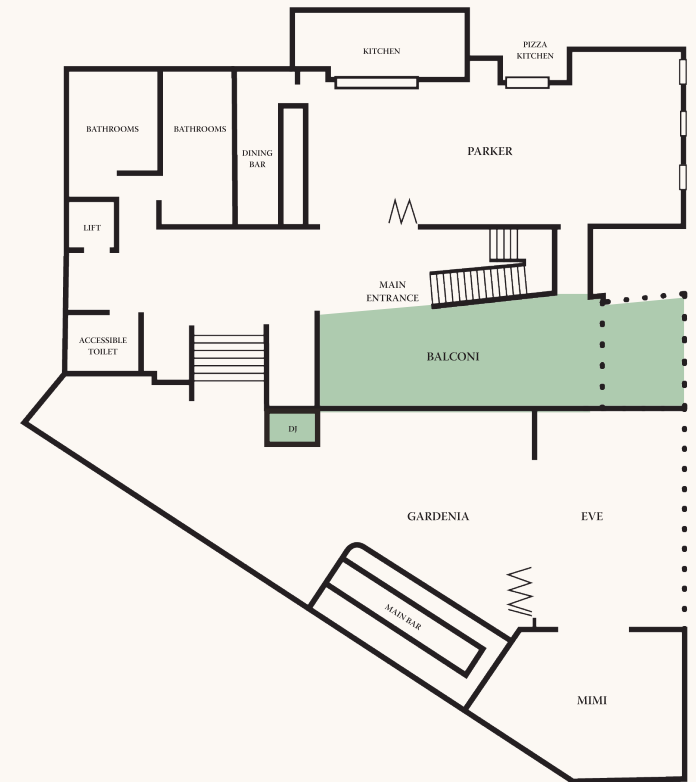




# Upstairs BALCONI

Situated in the heart of the upstairs mezzanine, you can fully immerse yourself in the atmosphere while enjoying your own exclusive space.

Through a sliding door lies an outdoor deck with views of High Street. Whether a leisurely long lunch or a laid-back cocktail style event, Balconi is the perfect space.



60

COCKTAIL



30

SEATED



✓

COVERED



✓

WHEELCHAIR  
ACCESS



×

MIC



×

SCREEN



×

PRIVATE  
MUSIC



×

PRIVATE  
BAR



×

HEATING



✓

COOLING  
MISTERS

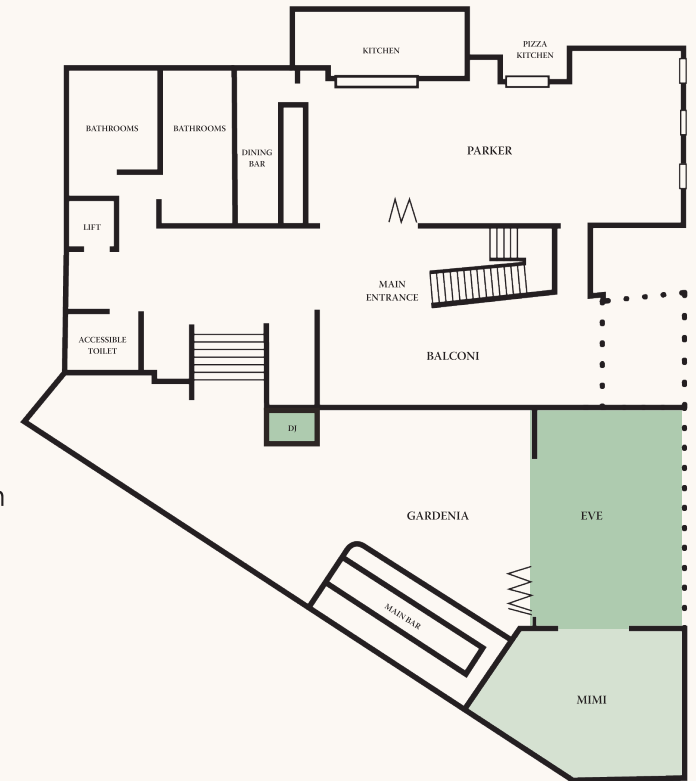












# Upstairs EVE

If you're seeking a flexible semi-private outdoor area, Eve could be the perfect choice. With retractable awnings offering protection from the weather and lush greenery enhancing the alfresco ambiance.

Ideal for casual gatherings, Eve offers your own section of a lively bar atmosphere.

For additional space and exclusivity, consider hiring the adjacent Mimi room.



										
EVE	40	28	✓	✓	✓	✓	✓	✓	✓	✓
MIMI + EVE	70	60	✓	✓	✗	✓	✗	✗	✓	✓
MIMI + 1/2 EVE	45	30	✓	✓	✗	✓	✗	✗	✓	✓
	COCKTAIL	SEATED	COVERED	WHEELCHAIR ACCESS	MIC	SCREEN	PRIVATE MUSIC	PRIVATE BAR	HEATING	COOLING MISTERS

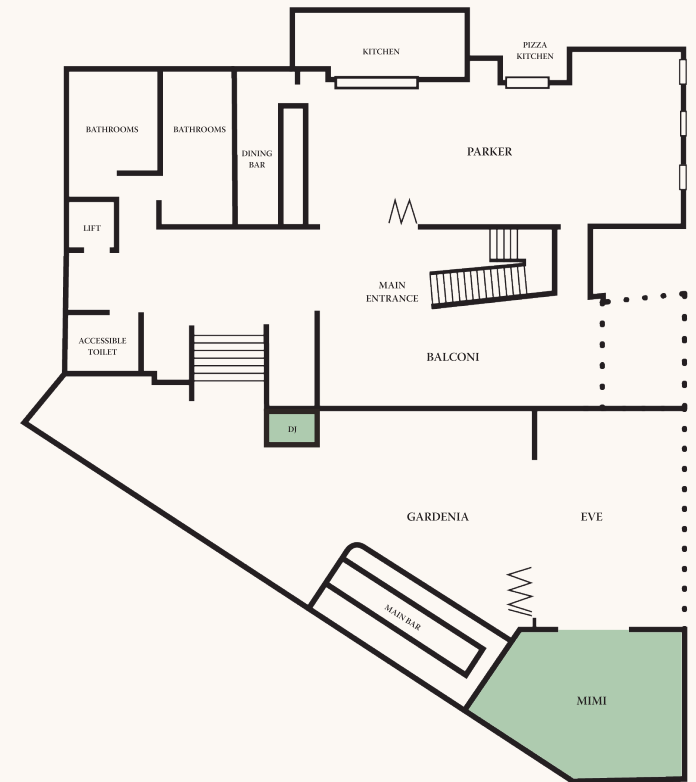




# Upstairs MIMI PRIVATE DINING

This delightful corner nook provides views of Kew Junction and is adaptable for any event. A convenient drinks window ensures easy access to bar service, while the rattan furniture and ornate wallpaper minimize the need for decorations.

For additional space and versatility, consider hiring all or half of the Eve. With retractable awnings and lush ferns, Mimi & Eve combined offers an ideal indoor/outdoor events space suitable all year round.



30

COCKTAIL



30

SEATED



COVERED



WHEELCHAIR  
ACCESS



MIC



SCREEN



PRIVATE  
MUSIC



PRIVATE  
BAR



HEATING



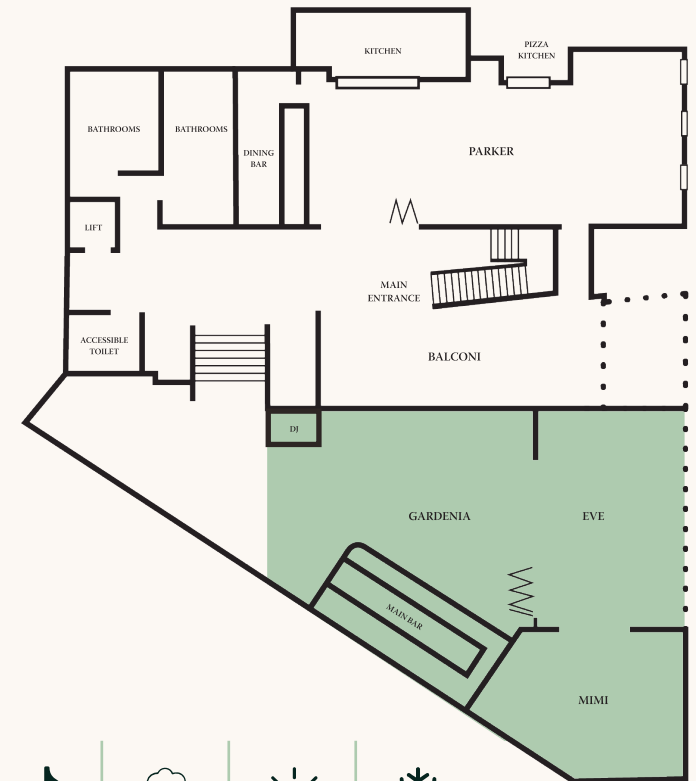
COOLING  
MISTERS



# Upstairs GARDENIA MIMI & EVE

The Gardenia space boasts an atrium-style roof adorned with hanging fauna, plush seating, and a spacious bar. From Friday to Sunday, enjoy a dynamic lineup of DJs and artists.

Exclusive hire of Gardenia is available only when combined with Eve and Mimi.



200

COCKTAIL



COVERED



WHEELCHAIR  
ACCESS



MIC



SCREEN



PRIVATE  
MUSIC



PRIVATE  
BAR



HEATING



COOLING  
MISTERS





# Menu SIT DOWN

Choose from the 3 below menu styles that will suit your event requirements. All the menus include complimentary sides to share. Dietary requirements can be catered for with advance notice.

## **ALTERNATE DROP MENU**

Pre-select 2 dishes for each course that will be served to guests on a 50/50 drop.  
2 course \$74pp | 3 course \$84pp

## **CHOICE MENU**

Select 3 entrees, 4 mains and 3 dessert dishes for your guests to select on the day.  
2 course \$69pp | 3 course \$79pp

## **SHARING MENU**

Feed me style chef selected dishes.  
Dietary requirements and preferences can be accommodated.  
2 course entree & main \$69pp | 3 course \$79

Dish selections can be made on page 12



## ENTRÉE

Grilled Haloumi, caramelised peach, hot honey, mint <sup>LGO, VGO</sup>

Spiced pumpkin, maple miso dressing, pistachio dukkah <sup>VG GF</sup>

Calamari, smoked chipotle mayo, grilled lemon <sup>GF DF</sup>

Prawn cocktail, Marie Rose sauce, iceberg <sup>GF DF</sup>

ADD warm bread roll, whipped butter \$4pp

## MAIN

Skinny Dog parmigiana, 450g Napoli, ham, cheese blend, salad, chips

Pan-fried barramundi, smoked eggplant, pomegranate <sup>GF DF</sup>

300g porterhouse steak, red wine jus <sup>GFO DF</sup> served medium rare or medium well

Pork schnitzel, mash, red wine jus <sup>LD, LG</sup>

Tandoori spiced chicken breast, yoghurt, mint, papadam (mild) <sup>LDO, LG</sup>

Lamb backstrap, Provençal cherry tomatoes, salsa verde <sup>LD LG</sup>

Carrot & lentil curry, eggplant kasundi, coconut rice, pappadum, chilli <sup>LD, LG</sup>

## COMPLIMENTARY SHARED SIDES

Side salad & fries

## DESSERTS

Chocolate tart, praline, whipped Chantilly cream <sup>LD, LG</sup>

Crème caramel, caramelised orange <sup>LD, LG</sup>

Churros, cinnamon sugar, ice cream, chocolate sauce <sup>V</sup>

OR your celebration cake cut and served \$50 per cake

**V** vegetarian **VG** vegan **LG** low gluten **LD** low dairy **O** Optional





# Standing EVENTS

For standing events you can mix and match all the options to create a bespoke food offering that fits your requirements. All options are served roaming for your guests, dietary requirements can be catered to in advance.

## **CANAPÉ PACKAGES (MIN 30 GUESTS)**

Choose from hot, cold or dessert options.

2 course \$65pp | 3 course \$75pp Choose from hot, cold or dessert options.

## **INDIVIDUAL PLATTERS & PIZZAS**

Great for casual events and group bookings or to top up a canapé package, can also be selected as sole offering if a canapé package is not for you.

## **CAKEAGE**

Your celebration cake can be cut and served to your guests at \$50 per cake. Individual cupcakes and cookies will not incur a cakeage fee.



# CANAPE PACKAGES

6 canapés \$39 | 8 canapés \$47 | 10 canapés \$59

## HOT

Sesame sausage rolls <sup>VO</sup>  
Baby char sui pork bao bun, coriander <sup>DFO VGO</sup>  
Party pies, tomato sauce  
Asian chicken skewers <sup>GF VO</sup>  
Salt & pepper calamari <sup>GF DF</sup>  
Prawn dumplings, soy <sup>VO</sup>  
Popcorn shrimp, ranch <sup>GF</sup>  
Vegetarian spring rolls <sup>VG GF</sup>  
Mini potato cake, pickled onion, spicy mayo <sup>V DF</sup>  
3 cheese and herb croquettes, sumac salt <sup>V</sup>  
Polenta chips, black pepper aioli <sup>VG GF</sup>

## COLD

Roast duck, cucumber, hoisin pancakes  
Salmon nigiri <sup>VGO GF</sup>  
Tomato, mozzarella, basil skewer <sup>V GF</sup>  
Melon, prosciutto, skewer <sup>GF</sup>

## DESSERTS

Lemon curd tartlets <sup>GFO</sup>  
Churros, chocolate sauce <sup>DFO</sup>

## ADD HANDHELDS / BOWL ITEMS \$10

Yellow chicken curry, basmati rice, coconut <sup>GF DF</sup>  
Fish & chips, tartare sauce, lemon <sup>GFO DFO</sup>  
Tomato romesco linguine <sup>V</sup>  
Fried calamari, wombok salad <sup>GF DF</sup>





## INDIVIDUAL PLATTERS

### 30 PIECES

Beef & cheese sliders, tomato sauce <sup>VO GFO</sup>	\$210	Prawn dumplings <sup>VO</sup>	\$150
Asian chicken skewers <sup>GF VO</sup>	\$180	Salt & pepper calamari <sup>GF DF</sup>	\$95
Party pies, tomato sauce	\$120	Mini potato cake, truffle aioli <sup>V DF</sup>	\$60
Vegetarian spring rolls <sup>VG GF</sup>	\$70	Spinach and feta quiche <sup>V GFO</sup>	\$120
Sesame sausage rolls <sup>VO</sup>	\$120		
Sandwiches chicken mayo/egg mayo	\$65		
Sushi selection fish & vegetarian <sup>GF</sup>	\$95		

## PINSA PIZZA (9 SLICES)

<b>MARGARITA</b>	\$24	<b>PUMPKIN</b>	\$24
Napoli, smoked bocconcini, basil <sup>V</sup>		Pumpkin, Napoli, pumpkin, whipped ricotta, thyme honey, pumpkin seeds <sup>V</sup>	
<b>PROSCIUTTO</b>	\$26	<b>SALAMI</b>	\$26
Prosciutto, rocket, baby bocconcini, capers		Salami, Napoli, mozzarella, salami, pepperoni, green pepper, olives	
<b>PRAWN</b>	\$24		
Prawn, shrimp, green peppers, sour cream, Japanese BBQ sauce			

**GF BASE** +\$5ea



# BEVERAGE

## BAR TAB

A bar tab can be organised instead of a package and you will be in control of the amount you spend and offering available to your guests.

To select drinks for the bar tab please request the on consumption bar list.

## HOUSE DRINKS PACKAGE

2 hr \$45 | 3 hr \$55 | 4 hr \$65 | 5 hr \$75

### WINE

Vivo Sparkling  
Willowglen Sauvignon Blanc  
Willowglen Shiraz Cabernet

### BEER

Carlton Draught, Furphy Ale  
Light Beer Stubby

### NON-ALC

Soft drinks and juices

## CASH BAR

A cash bar can be organised alongside a bar tab where guests can purchase their own drinks from our beverage list.

Please note only certain areas can permit a cash bar contributing to minimum spend.

## STANDARD DRINKS PACKAGE

2 hr \$55 | 3 hr \$65 | 4 hr \$75 | 5 hr \$85

### WINE

Vivo Sparkling  
Pete's Pure Prosecco  
Willowglen Sauvignon Blanc  
Young Poet's Chardonnay  
Willowglen Shiraz Cabernet  
Charles & Co Pinot Noir

### BEER

Carlton Draught, Furphy Ale, Little Creatures,  
Balter, Stone & Wood, Goat, Cider, Light Beer

### NON-ALC

Soft drinks and juices



A photograph of a glass filled with an amber-colored iced beverage, garnished with a slice of orange and a red berry. The glass sits on a light-colored wooden surface. The background is a warm, out-of-focus orange-red color.

# USEFUL INFO

## MINORS

In line with our liquor licence, patrons under 18 must be accompanied by parent or guardian and depart the venue when the kitchen closes.

## ACCESSIBILITY

Wheelchair access is available via High Street. The venue features accessible toilets on both floors, as well as a lift that operates between levels and another lift that connects the upstairs main floor with the mezzanine level.

## MENUS

Our food and beverage menus are subject to change in both offering and pricing structure.

## PARKING/GETTING HERE

Plentiful free 2hr parking can be accessed via Brougham Street in either the Leo's or Woolworths Carparks. There is also a tram stop outside the venue on High Street.

## MINIMUM SPENDS

Exclusive hire of areas will require a minimum spend to book the space. This varies depending on day and time of the year. Minimum spends can be met through food and beverage spend only.

Areas may be booked on a non-exclusive basis where minimum spends can be reduced or don't apply.