



# SKINNY DOG HOTEL



SKINNY DOG HOTEL

*Function Pack*





# Welcome to THE SKINNY DOG HOTEL

Smack bang in the middle of Kew Junction is where you find us, a bustling local institution serving cold beers and great food since 1853. With two levels and multiple offerings there is something for everyone at The Skinny Dog Hotel.

Downstairs, you will find a comfy pub atmosphere with dining rooms to enjoy classic pub fare, two bars and a beer garden.

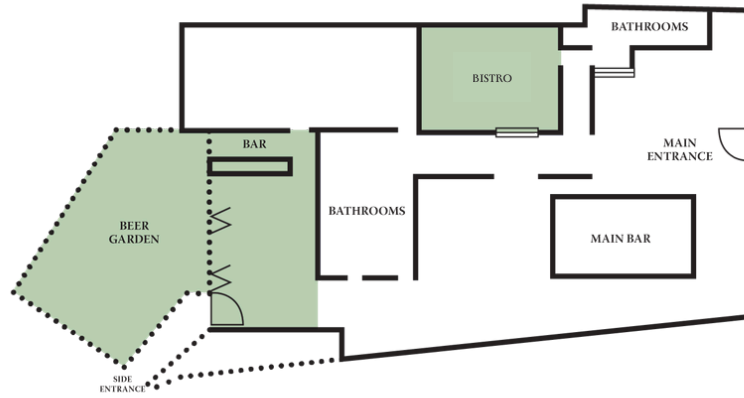
Upstairs, a light filled atrium awaits, full of hanging plants, indoor and outdoor open plan spaces for year round use.

There are many different every spaces to cater to any requirement be it semi-private, exclusive or just casual bar reservations.

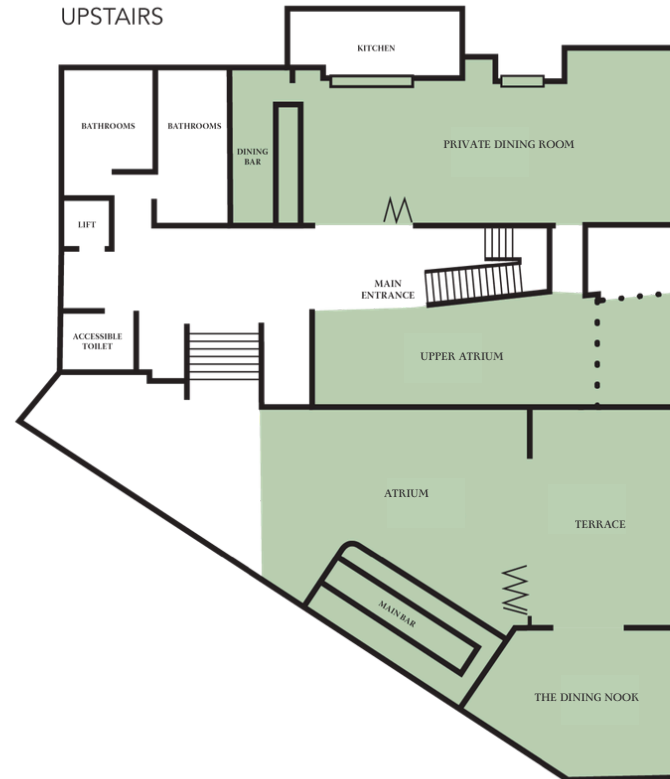
SKINNYDOGHOTEL.COM.AU | 03 9853 8023 | 155 HIGH STREET KEW VIC 3101

# Venue FLOORPLAN

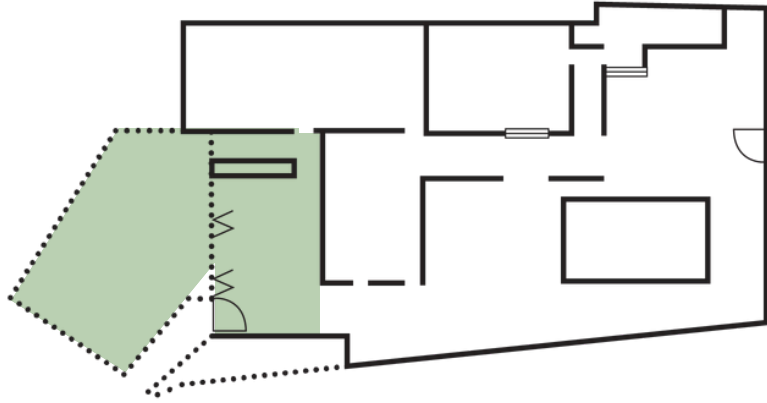
DOWNSTAIRS



UPSTAIRS











# Downstairs BEER GARDEN BAR



Exclusive hire of the beer garden and inside back bar includes a private entrance to provide your very own section of the pub!

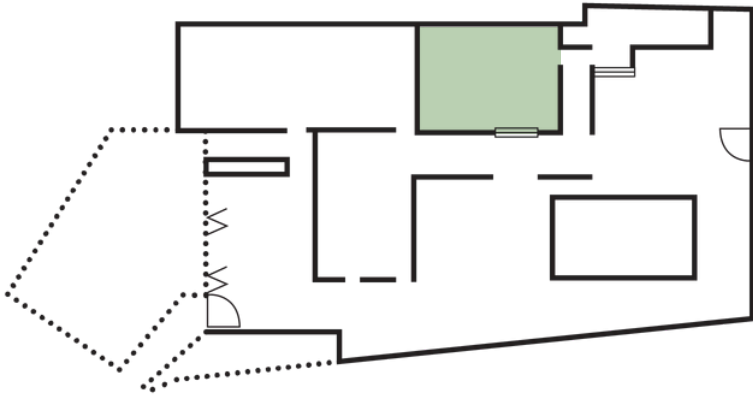
The indoor bar is fully covered so you won't have to worry about the elements.

For smaller events we suggest having this area semi-private by hiring half of the bar and beer garden.

SPACE TYPE								
SEMI-PRIVATE	-	50	N	N	N	Y	Y	PARTIAL
PRIVATE	-	130	Y	Y	Y	Y	Y	Y











# Downstairs BISTRO



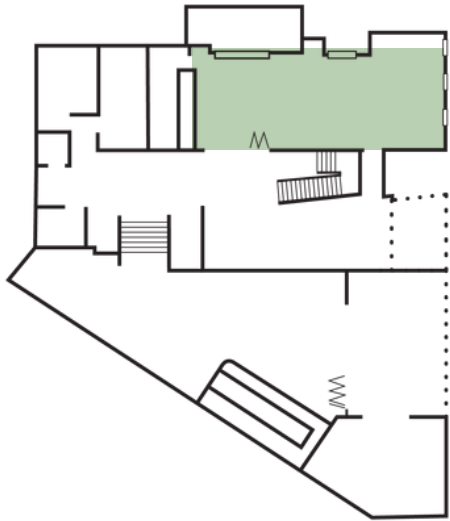
Nestled away from the main bar in the middle of the venue, our semi-private bistro features exposed brickwork and statement art pieces giving big NY loft vibes.

Perfect for seated events that want a separate space but with a vibrant atmosphere.

SPACE TYPE								
SEMI-PRIVATE	40	50	Y	N	N	Y	N	Y











# Upstairs PRIVATE DINING ROOM



A versatile art deco restaurant space seamlessly transitions between standing and seated event configurations.

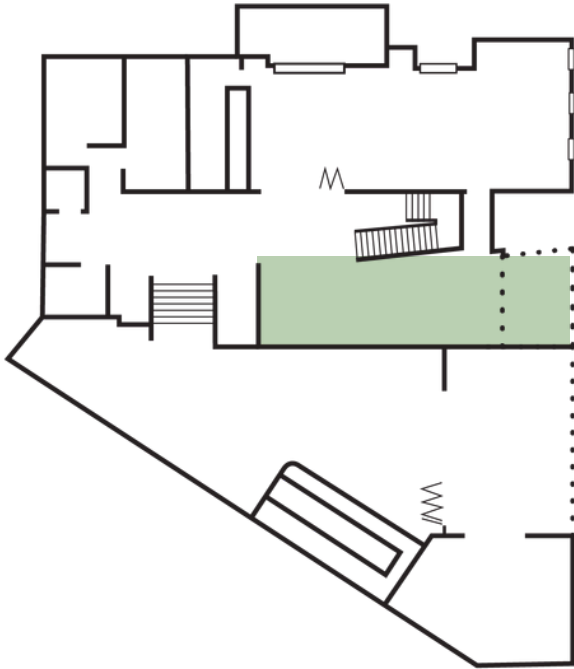
A bi-fold door ensures privacy, with an elegant mirrored bar and stylish decor for a visually captivating setting.

For larger events, the adjoining the Upper Atrium space offers exclusive access to the mezzanine of the upstairs area.

SPACE TYPE								
PRIVATE DINING ROOM	50	80	Y	Y	Y	Y	Y	Y
PRIVATE DINING ROOM + UPPER ATRIUM	80	150	Y	Y	Y	Y	Y	Y







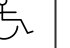



# Upstairs ATRIUM



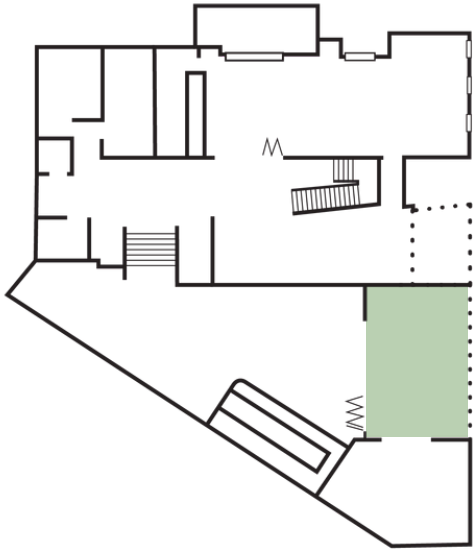
Situated in the heart of the upstairs mezzanine, you can fully immerse yourself in the atmosphere while enjoying your own exclusive space.

Through a sliding door lies an outdoor deck with views of High Street. Whether a leisurely long lunch or a laid-back cocktail style event, the Upper Atrium is the perfect space.

SPACE TYPE								
PRIVATE	30	60	Y	N	N	N	Y	Y











# Upstairs TERRACE



If you're seeking a flexible semi-private outdoor area, The Terrace could be the perfect choice. With retractable awnings offering protection from the weather and lush greenery enhancing the alfresco ambiance.

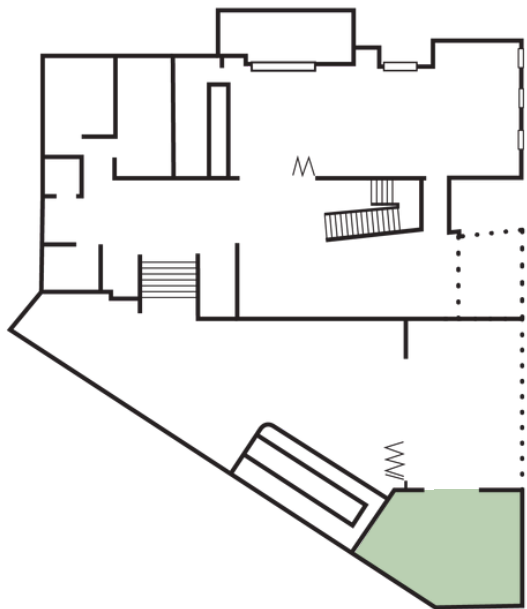
Ideal for casual gatherings, the Terrace offers your own section of a lively bar atmosphere.

For additional space and exclusivity, consider hiring the adjacent Dining Nook.

SPACE TYPE								
TERRACE	34	50	Y	N	Y	Y	Y	Y
DINING NOOK + TERRACE	60	90	Y	N	Y	Y	Y	Y
DINING NOOK + ½ TERRACE	-	45	Y	N	N	N	Y	Y











# Upstairs DINING NOOK



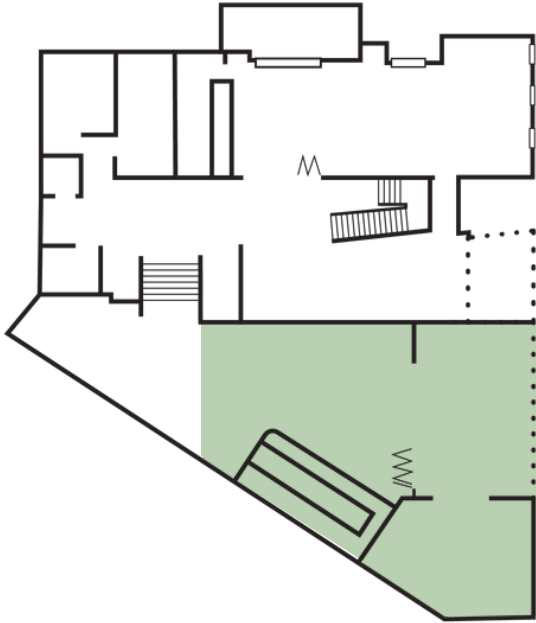
This delightful corner nook provides views of Kew Junction and is adaptable for any event. A convenient drinks window ensures easy access to bar service, while the rattan furniture and ornate wallpaper minimize the need for decorations.

For additional space and versatility, consider hiring all or half of the Terrace. With retractable awnings and lush ferns, Atrium and Terrace combined offers an ideal indoor/outdoor events space suitable all year round.

SPACE TYPE								
PRIVATE	24	30	Y	Y	Y	Y	Y	Y











# Upstairs TERRACE, ATRIUM & DINING NOOK



The Gardenia space boasts an atrium-style roof adorned with hanging fauna, plush seating, and a spacious bar. From Friday to Sunday, enjoy a dynamic lineup of DJs and artists.

Exclusive hire of the Atrium is available only when combined with the Terrace and Private Dining Nook.

SPACE TYPE								
PRIVATE	-	220	Y	Y	Y	Y	Y	Y





# Menu SIT DOWN

Choose from the 3 below menu styles that will suit your event requirements.  
Dietary requirements can be catered for with advance notice.

## **ALTERNATE DROP MENU**

Pre-select 2 dishes for each course that will be served to guests on a 50/50 drop.  
2 course \$78pp | 3 course \$89pp

## **CHOICE MENU**

Select 2 entrees, 4 mains and 2 dessert dishes for your guests to select on the day.  
2 course \$73pp | 3 course \$83pp

## **SHARING MENU**

Feed me style chef selected dishes.  
Dietary requirements and preferences can be accommodated.  
2 course entree & main \$69pp | 3 course \$79

Dish selections can be made on the following page.



# Menu SIT DOWN

## ENTRÉE

Haloumi, grapes, honey raisins, pickled chilli, chives LG V

Calamari, smoked chipotle mayo, pickled fennel salad LD LGO

Tempura cauliflower, tamarind glaze, miso mayo, sesame LD VG

Chorizo and manchego croquettes, aioli, parmesan, chives

## MAIN

Skinny Dog parmigiana, napoli, ham, cheese blend, salad, chips

Pan-fried barramundi, cavolo nero, chats, salsa verde LD, LG

250g porterhouse steak, chat potatoes, red wine jus LD LGO

Half chicken, cavolo nero, chats, chimmicurri butter LDO, LG

Mushroom gnocchi LDO, LGO, VG

## DESSERTS

Chocolate torte, berry gelato, red fruit compote LD, LGO, VG

Sticky Toffee Pudding, butterscotch sauce, vanilla ice cream V

**V** vegetarian | **VG** vegan | **LG** low gluten | **LD** low dairy | **O** Optional



# Capape PACKAGES

6 CANAPÉS \$40 | 8 CANAPÉS \$49 | 10 CANAPÉS \$61

---

## SAVOURY

Heirloom tomato bruschetta | LD, LGO, VG

Burnt honey pumpkin feta tartlet | V

Assorted sushi | LD, LG, VO, VGO, M

Caramelised onion and potato tartlet | V

Pork and fennel sausage rolls

Mini beef pie

Vegetarian spring rolls | LD, LG, VG

Mushroom truffle arancini | LD, LG, VG

Chorizo and manchego croquettes

Fried prawn dumplings | LD, LG, I

Vegetable dumplings | LD, V

Honey glazed fried chicken tenders

Blue cheese and cauliflower croquettes | V

Chimicurri chicken skewers | LG

## DESSERTS

Chocolate torte bites | V, LD, VG

Lemon berry tartlets | V

Sticky date toffee bites | V

Chocolate brownie bites | V

V vegetarian | VG vegan | LG low gluten | LD low dairy | O Optional | M - Mixed | I - Imported



# Individual PLATTERS

---

## 30 PIECES

Beef sliders   LDO	\$210
Mini beef pie	\$190
Pork and fennel sausage roll	\$190
Chimnicurri chicken skewer   LD, LG	\$180
Mushroom arancini   LD, LG, VG	\$140

## ADD HANDHELDS / BOWL ITEMS \$10

- Yellow chicken curry, basmati rice, coconut GF DF
- Fish & chips, tartare sauce, lemon GFO DFO
- Tomato romesco linguine V
- Fried calamari, wombok salad GF DF

**V** vegetarian | **VG** vegan | **LG** low gluten | **LD** low dairy | **O** Optional



# Beverage OPTIONS

## BAR TAB

A bar tab can be organised instead of a package and you will be in control of the amount you spend and offering available to your guests. To select drinks for the bar tab please request the on consumption bar list.

## CASH BAR

A cash bar can be organised alongside a bar tab where guests can purchase their own drinks from our beverage list. Please note only certain areas can permit a cash bar contributing to minimum spend.

---

## BASIC DRINKS PACKAGE

2 hr \$51 | 3 hr \$65 | 4 hr \$78

### WINE

Mr Mason Sparkling Cuvee Brut NV  
Dottie Lane Sauvignon Blanc  
Hearts Will Play Rose  
Henry & Hunter Shiraz Cabernet

### BEER

Carlton Draught, Furphy Ale  
Light Beer Stubby

### NON-ALC

Soft drinks and juices

### ADD-ONS:

SPIRITS UPGRADE:

\$25 per person

Available to add to all beverage packages

### COCKTAIL ON ARRIVAL

\$17 per person, choice of Margarita, Espresso Martini, Limoncello Spritz or Hibiscus Spritz

## PREMIUM DRINKS PACKAGE

2 hr \$63 | 3 hr \$75 | 4 hr \$89

### WINE

Mr Mason Sparkling Cuvee Brut NV  
Mount Paradiso Prosecco NV  
Dottie Lane Sauvignon Blanc  
Mill Flat Sauvignon Blanc  
Lost Woods Chardonnay  
Hearts Will Play Rose  
Sud Rose - magnum 1500ml  
Storm & Saint Pinot Noir  
Henry & Hunter Shiraz Cabernet

### BEER

Carlton Draught, Furphy Ale, 150 Lashes Pale Ale, Balter, Stone & Wood, Skinny Dog Larger, Cider, Light Beer

### NON-ALC

Soft drinks and juices



# Useful INFORMATION

## **MINORS**

In line with our liquor licence, patrons under 18 must be accompanied by parent or guardian and depart the venue when the kitchen closes.

## **ACCESSIBILITY**

Wheelchair access is available via High Street. The venue features accessible toilets on both floors, as well as a lift that operates between levels and another lift that connects the upstairs main floor with the mezzanine level.

## **MENUS**

Our food and beverage menus are subject to change in both offering and pricing structure.

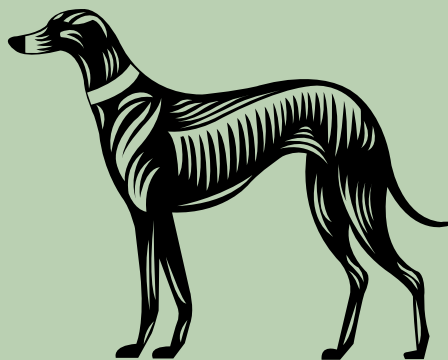
## **PARKING/GETTING HERE**

Plentiful free 2hr parking can be accessed via Brougham Street in either the Leo's or Woolworths Carparks. There is also a tram stop outside the venue on High Street.

## **MINIMUM SPENDS**

Exclusive hire of areas will require a minimum spend to book the space. This varies depending on day and time of the year. Minimum spends can be met through food and beverage spend only.

Areas may be booked on a non-exclusive basis where minimum spends can be reduced or don't apply.



*Skinny Dog*

EST. HOTEL 1873

*Contact us*

03 9853 8023

SKINNYDOGHOTEL.COM.AU

155 HIGH STREET, KEW, VIC 3101